

HIGH CAPACITY FLOAT AND THERMOSTATIC STEAM TRAPS FLT 150 S (Fabricated steel) DN100 – DN150

DESCRIPTION

FLT150S float and thermostatic (integral air vent) steam traps series are designed for all types of low and medium pressure steam heating and process equipment.

Typical applications include unit heaters, heat exchangers, driers, jacketed vessels and all the applications where continuous drainage is essential.

Specially designed for sugar and alcohol refineries and where extremely high flow rates are involved.

Connections are flanged.

MAIN FEATURES

Modulating discharge.

Discharges condensate at steam temperature.

Unaffected by sudden or wide load and pressure changes.

Excellent air discharge (by high capacity thermostatic air vent)

OPTIONS: By-pass valve with aperture indicator

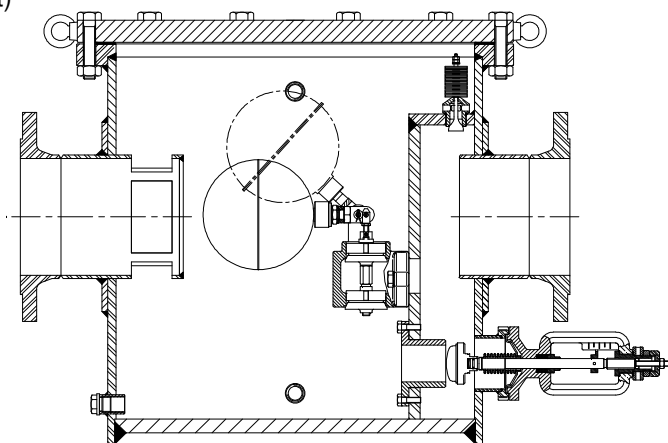
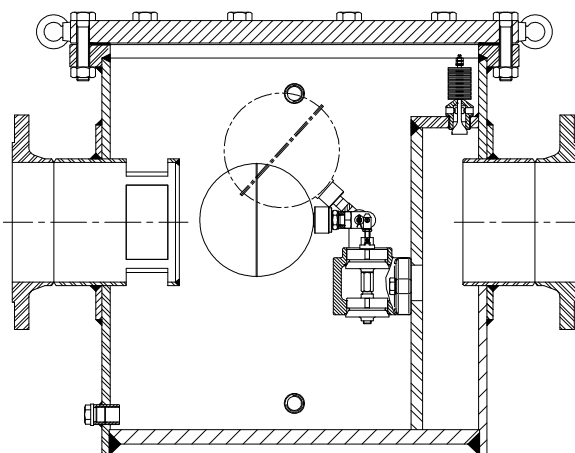
USE: Saturated steam.

AVAIL. MODELS: FLT150S-TW – Double mechanism

FLT150S-O – Single mech. w/ orifice

SIZES: DN 100 to DN 150

CONNECTIONS: Flanged EN 1092-1 PN16 or ANSI



BODY LIMITING CONDITIONS	
FLANGED PN 16 / ANSI 150 *	RELATED TEMP.
ALLOW. PRES.	
14,8 bar	100 °C
13,3 bar	200 °C
12,1 bar	250 °C
11 bar	300 °C

PMO - Max. operating pressure 12 bar

TMO - Max. operating temperature 250 °C

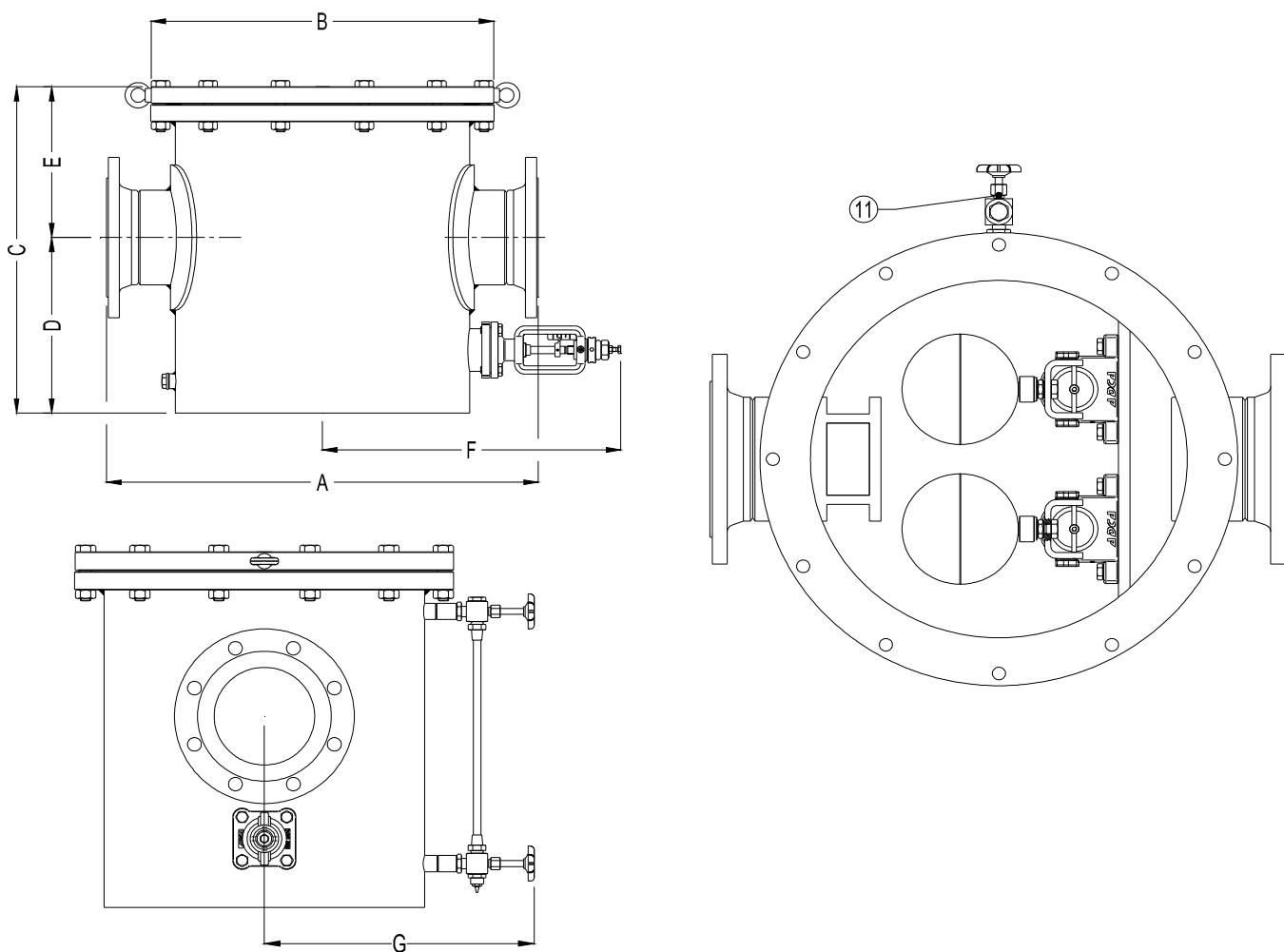
* According to EN1092-1:2007

FLOW RATE CAPACITY WITH ONE MECHANISM AND ORIFICE IN Kgs/h							
Dif. Press. bar	DN 100			DN 150			ΔQmax
0,1	22300	24100	26600	33700	43600	56400	18800
0,3	27400	30300	34200	45400	61200	81400	22700
0,7	32200	36200	41800	57700	79900	108600	26200
1	34700	39500	46500	65800	93100	128100	27700
1,4	37000	42600	50500	72900	104400	144900	29200
2	40700	47600	57200	84800	144900	172900	31700
Orifice Nr.	O1	O2	O3	O4	O5	O6	

CE MARKING (PED - European Directive 97/23/EC)	
Rated PN 10	Category
FLT150S-TW DN100 - DN150	2 (CE Marked)
Rated PN 16	Category
FLT150S-TW DN100 - DN150	3 (CE Marked)

Example: One FLT150-O DN150-05 (with orifice nr.5), operating at a D.P. of 0,3 bar, must have a minimum flow of 38500Kgs/h (61200-22700). The minimum flow rate is necessary to ensure that the orifice does not waste steam.

FLOW RATE CAPACITY WITH DOUBLE MECHANISM WITHOUT ORIFICE IN Kgs/h															
MODEL FLT	SIZE DN	DIFFERENTIAL PRESSURE (bar)													
		0,5	1	1,5	2	2,5	3	3,5	4	5	6	7	8	10	12
150S/TW	100-150	49000	58000	62000	68000	74000	76000	79000	84000	87000	91000	94000	96000	99000	100000


DIMENSIONS (mm)

MODEL	SIZE DN	A	B	C	D	E	F	G	WGT. Kgs
FLT 150S	100 - 150	745	600	580	312	268	515	400	297

MATERIALS

POS.N r.	DESIGNATION	MATERIAL
1	Body	P250GH / 1.0460 ; P235GH / 1.0305 ; S355J2G3 / 1.0570 ; S235JRG2/1.0038
2	Cover	S355J2G3 / 1.0570
3	*Gasket	Graphite
4	*Seat	CF8 / 1.4308
5	*Valve	AISI420 / 1.4021; CF8M / 1.4408
6	*Lever	AISI316 / 1.4401 ; AISI304 / 1.4301
7	*Float	AISI304 / 1.4301
8	*Air vent	Stainless steel (Bimetalic)
9	Bolts	Steel 8.8
10	By-pass valve	GJS-400-15 / 0.7040
11	Level indicator	Bronze ; Borosilicate glass

*Available spare parts.

